

Map of Mountain Nature Trail

Seven Stations on the Trail

Station 7: Golemo Ezero / Mountain House

Station 6: Border of Pelister National Park

Station 4: Former seasonal settlement

Station 5: Panorama

Station 3: Forest

Station 2: Brajcino river

Station 1: Brajcino village

The Mountain Nature Trail Golemo Ezero - Brajcino village
 The trail passes zones of different altitudes from around 1000 to 2400 m.a.s.l. passing seven stations with interpretative panels in Macedonian and English. The panels are placed in suitable locations where people can rest or have a look around.



Station 1 - **Brajcino village:**
 Beginning or end of the trail: traditional village with river, village architecture.

Station 2 - **Brajcino river:**
 River with woods, irrigation features, surrounding meadows, hedgerows.



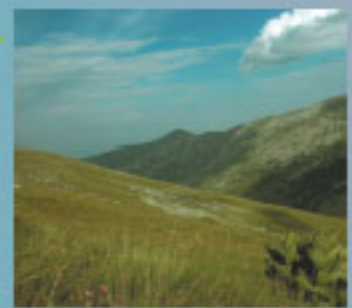
Station 3 - **Forest:**
 Young forest, old trees, transition zone between two types of forests; different plant species.

Station 4 - **Former seasonal settlement:**
 Cultural landscape in state of transition ("social fallow") with change of land use and landscape.



Station 5 - **Panorama:**
 Panorama with spectacular view of the mountain ranges, Brajcino valley, Prespa Lake, Albania and Greece.

Station 6 - **Border of Pelister National Park:**
 Alpine meadows with surrounding landscapes, glacial lake, half-wild horses, French road from 1st World War.



Station 7 - **Golemo Ezero/ Mountain house:**
 Beginning or end of the trail: alpine habitats of plant and animal communities; glacial lake with traces of glaciation; view into Nize Pole valley.

